

CLINICAL CASE REPORT FALL 2011

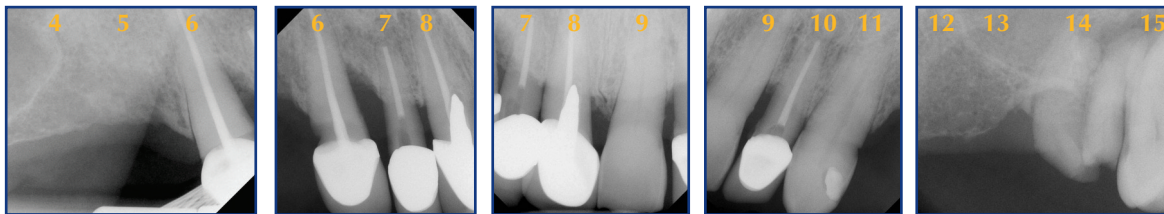
SOUTH JERSEY PERIODONTICS & DENTAL IMPLANTS, LLC

DANIEL KUBIKIAN, DMD

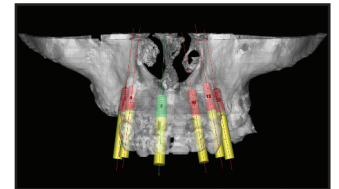
468 Hurffville Crosskeys Road • Atrium II, Suite 1 • Sewell, NJ 08080

Background: BL was unhappy with his smile. Many of his maxillary teeth were either missing or periodontally/restoratively compromised. BL wanted to have a fixed prosthesis which was cost effective. Additionally, BL did not want a removable transitional restoration at any point during therapy.

Initial Findings: Teeth #6-8 had 50-75% bone loss and tooth #14 was hopeless. The in-office 3D cone beam scan showed potential implant sites to be #4, 5, 8, 10, 12, 13. This would allow the transitional restoration to remain a tooth supported bridge #5-12 on abutment teeth #6, 7, 9 & 11.



3D Re-Creation



Step #1



Step #1: A tooth supported provisional bridge #5-12 was fabricated by the referring dentist and the patient returned to my office to have dental implants placed and the provisional recemented on the abutment teeth.

Step #2



Step #2: Dental implants were stabilized at sites #4, 5, 8, 10, 12, 13 and the tooth supported transitional bridge was recemented.

Case Conclusion:

All remaining maxillary teeth were removed and an implant supported hybrid was installed by the referring dentist. The final restoration also allowed the crossbite to be addressed while restoring function and esthetics.



"Well, the work was great and I enjoyed the office, staff and the detailed coordination with Dr. Horn. As a person who had a lot of trepidation going into this, I was really pleased."
Patient BL, Wenonah, NJ

"It was a pleasure working both with Dr. Kubikian and the patient. The teamwork was seamless and could not have been better!"
Dr. John Horn, Pitman, NJ

General Dentist
Laboratory

Dr. John Horn
Quintessence Lab,
Frank Wyatt